

AMS Device View

- Intuitive, browser-based interface
- Mobile-friendly device health dashboards
- View device health and calibration status from anywhere



AMS Device View on Mobile Phone and Tablet

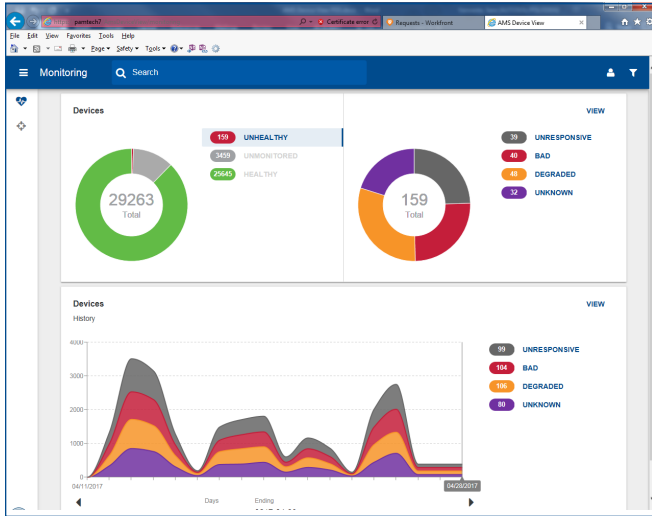
Overview

Predictive maintenance helps plants avoid unplanned shutdowns and inefficient practices that eat away at profits. AMS Device Manager helps avoid unnecessary downtime by providing a window into the health of intelligent field devices. It gives your maintenance and operations personnel the ability to work smarter. Based on real-time condition data, plant staff can respond quickly and make informed decisions on whether to maintain or replace field devices before the impact operations.

Extend Asset Management

AMS Device View extends your AMS Device Manager system by delivering device health and calibration status information through a browser-based interface. With AMS Device View, you can quickly see which devices need maintenance and can view recommended actions from the manufacturer – from any place that there is a browser connection.

Through intuitive dashboards and focused alerts, technicians can quickly access the data needed to respond quickly. When additional work is needed, AMS Device View can launch into the full AMS Device Manager system.



Device Health

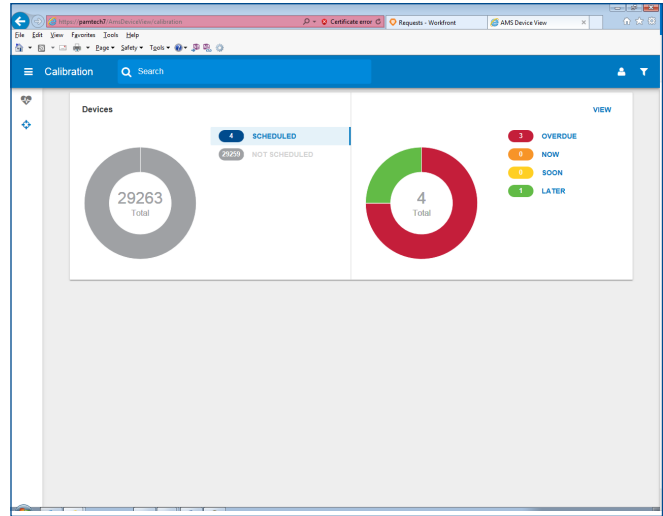
Insight into Unhealthy Devices

AMS Device View allows you to filter your devices by device status. You can easily see only failed devices, devices that need maintenance, unresponsive devices, devices with abnormal activity – or any combination of these.

AMS Device View trends unhealthy device history, allowing you to track how your instrument maintenance program is doing over time. You can change the range dates on the trend chart to see long term or short term trends.

Easily view all tags that are currently in alert. Or look at past alerts. Quickly see the criticality of an alert, how long the device has been in alert, and the priority of the asset.

When needed, easily export device health data to Microsoft Excel.



Calibration Status

View Calibration Status

AMS Device View allows you to filter your devices by calibration schedule. Sort by calibrations that are overdue, scheduled this week, scheduled this month, or scheduled for the future – or any combination of these.

Easily view all tags that need calibration. Sort by calibration schedule to streamline your calibration processes.

When needed, easily export device calibration data to Microsoft Excel.

©2017, Emerson. All rights reserved.

The Emerson logo is a trademark and service mark of Emerson Electric Co. All other marks are the property of their respective owners.

The contents of this publication are presented for informational purposes only, and while every effort has been made to ensure their accuracy, they are not to be construed as warranties or guarantees, express or implied, regarding the products or services described herein or their use or applicability. All sales are governed by our terms and conditions, which are available on request. We reserve the right to modify or improve the designs or specifications of our products at any time without notice.

Emerson
Reliability Solutions
 12001 Technology Drive
 Eden Prairie, MN 55344 USA
 www.emerson.com/ams