

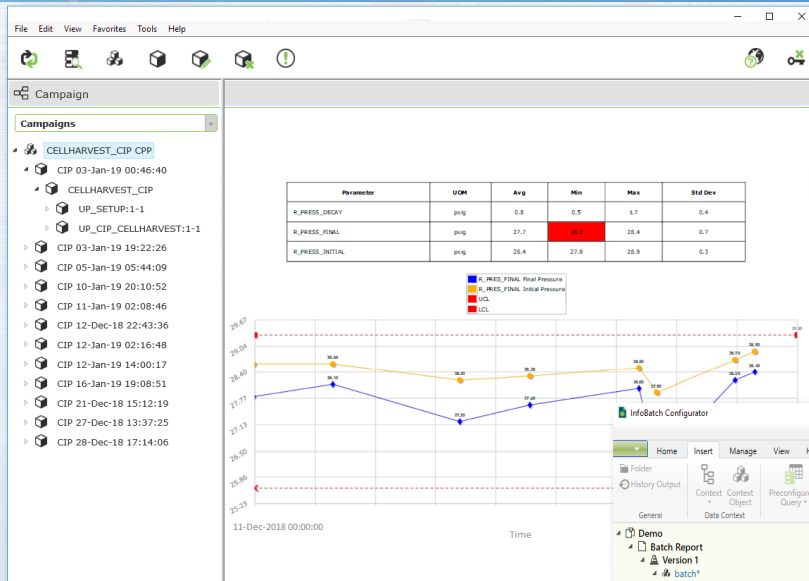
InfoBatch™

Better Reporting. Better Decisions.™

informetric

S Y S T E M S





InfoBatch is a manufacturing reporting suite that simplifies compliance documentation, production reporting and process analysis across many industries. By addressing the life cycle issues associated with programmed reporting solutions, InfoBatch has enabled manufacturers to improve productivity and reduce costs.

InfoBatch is not limited to batch reporting and has been applied for manufacturing intelligence in a variety of batch, semi-continuous and continuous processes.

**Batch Report**  
ID: 20190104.165438  
Report Generated: 04-Jan-2019 15:05:36

**Batch Summary**

Batch ID	Start	End	Duration
20190104.165438	04-Jan-2019 05:32:14	04-Jan-2019 14:51:11	09 Hrs 18 Min 57 Secs

**Unit Summary**

Unit Procedure	Unit	Start Date/Time	End Date/Time	Duration
UP_DEMO_CWKG-1-1	LIC-3301	04-Jan-2019 05:32:11	04-Jan-2019 11:50:42	06 Hrs 17 Min 31 Secs
UP_DEMO_FEED-1-1	LIC-3401	04-Jan-2019 12:01:55	04-Jan-2019 14:23:20	02 Hrs 23 Min 25 Secs

**Alarm Summary**

Date/Time	Area	Module	Alarm Type	Alarm Level	Description
04-Jan-2019 06:23:58	DEMO_AREA_1000	LIC-3301/PD3301_01	LOW	10-POINT	Low Alarm Value 2.80177 Limit 0
04-Jan-2019 06:24:18	DEMO_AREA_1000	LIC-3301/A3301_01	OFF	10-POINT	General IO Failure
04-Jan-2019 06:24:18	DEMO_AREA_1000	LIC-3301/A3301_01	HIGH	10-POINT	High Alarm Value 0.134552 Limit 10
04-Jan-2019 06:25:02	DEMO_AREA_1000	LIC-3301/PD3301_01	LOW	10-POINT	Low Alarm Value -0.302235 Limit 0
04-Jan-2019 06:26:07	DEMO_AREA_1000	LIC-3301/PD3301_01	LOW	10-POINT	Low Alarm Value 1.55248 Limit 0
04-Jan-2019 06:27:00	DEMO_AREA_1000	LIC-3301/PD3301_01	LOW	10-POINT	Low Alarm Value -0.0095537 Limit 0

**Batch Events**

Date/Time	Area	Process Cell	Phase Module	Event Type	Message
04-Jan-2019 05:32:14			VA1_PR_DEMO\	State Command	State Commanded: START

**Operator Prompts**

Date/Time	Area	Process Cell	Phase Module	Event Type	Message
04-Jan-2019 14:24:23	PSF	PSF_PCELL	AI_PR_DEMO_SETUP	Prompt Response	Manual Connections Made? YES phase_boolean

**Critical Process Parameters**

Date/Time	Process Cell	Unit	Phase Module	Parameter	Value	UOM
03-Jan-2019 15:31:57	CIP_PCELL	LIC-3301	CIP_BURST_RINSE	R_AVG_TEMP	80.97901	°C

**Certificate of Analysis**  
Acme Consumer Brands

Report Generation Date: 07/21/17 17:04:17  
Customer: Acme Consumer Brands  
Total Number of Items: 64  
Purchase Order Number: 2877081  
Shipment Method: BULK

**Shipment Summary**  
Shipped Date/Time: 7/18/2017 2:42:43 PM  
Bill Of Lading No: 0822006  
Total Weight (lbs): 51200  
Material Grade Number: PremiumPlus  
Carrier: Acme Freight

**Laboratory Test Data**

Measurement	Average	STD	Minimum	Maximum	Count
Weight per unit area	905.8	6.2	901	913	10
Brightness	83.96	0.22	83.6	84.23	16
Thickness	51.82	0.44	51.4	52.23	9
Density	0.51	0.01	0.5	0.56	24
Visual Defects	0.46	0.21	0.5	1	16
Viscosity	19.26	2.37	14	21.8	34

**In-Process Data**

Roll ID	Lot Number	Basic Weight Average	Caliper Average	Moisten Average	Product Weight	Roll Wgt or Skipped	Width or Skipped
181M23252A	18176201	517.0	58.6	6.8	805.0	842.0	20.0
181M23252B	18176201	510.3	57.0	6.0	906.0	844.0	20.0
181M23252A	18176201	511.4	58.1	6.7	784.0	821.0	20.0
181M23252B	18176201	510.2	56.6	6.0	783.0	819.0	20.0
181M23261K	18176201	509.4	56.4	6.2	761.0	795.0	20.0
181M23261J	18176201	507.2	56.7	5.5	762.0	797.0	20.0
181M24073E	18176201	519.4	61.7	6.8	816.0	843.0	20.0
181M24073J	18176201	513.1	60.4	6.7	809.0	841.0	20.0
181M24073K	18176201	514.8	58.3	6.8	795.0	827.0	20.0

Informetric applications adhere to current industry-standard communication and data access protocols. As a result, Informetric software can be integrated with existing legacy systems as well as support new applications.

Data from anywhere, when you want it, however you want to see it.

#### On demand reports from the source with no replication

InfoBatch does not replicate data. Instead, data is retrieved from the original source each time a report is generated. By eliminating replication, InfoBatch avoids many cost, complexity, reliability and validation issues associated with data replication.

#### All-encompassing

InfoBatch aggregates information from various data sources into a single "virtual database". Reports can include any data related to process and quality including critical parameters, bill of materials, work instructions, alarms, events, operator actions, trends, detailed exception/limit violation summaries and cycle times associated with critical operations.

#### Industry-standard compatibility



Conformance to industry-standard data access protocols ensures compatibility with

virtually all process historians, batch historians, LIMS, MES and ERP systems. As a result, InfoBatch can be applied without incurring major infrastructure upgrade costs.

#### Easy to configure and use

User-friendly Windows® and web browser client applications reduce training costs.

#### Automatic report generation

InfoBatch AutoGen™ automatically generates and prints PDF documents on a time and event basis.

#### Regulatory compliance

InfoBatch is well suited for regulated facilities and was designed from the start to conform to FDA 21 CFR Part 11, Electronic Records and Signatures. Rigorous security, audit trails and version control ensure compliance with FDA regulations and simplify life cycle management.

#### Applications

Batch Reporting

Equipment Tracking

Alarm Analysis

Material Tracking

Certificates of Analysis

Process Analytical Technology (PAT)

Overall Equipment Effectiveness (OEE)

The screenshot shows a software interface for editing expressions. The main window is titled 'Edit Expression' and has tabs for 'General', 'Source', 'Conditional Execution', and 'Miscellaneous'. The 'Source' tab is active, showing a tree view of the report structure. Below the tree view, there is a preview of the report titled 'Alarm Summary'. The preview shows a table with the following data:

Date/Time	Area	Module	Alarm Type	Alarm Level	Description
03-Jan-2019 14:23:58	DEMO_AREA_1000	LIC-3301	LOW	10-POINT	Low Alarm Value 2.80177 Limit 0
03-Jan-2019 14:24:18	DEMO_AREA_1000	TA_09_110/AI09100_01	IOF	10-POINT	General I/O Failure

#### Designed for engineers, not programmers

With structured data models and an interactive report layout tool, InfoBatch is configured, not programmed.

**30%** of Fortune 100 manufacturers rely on Informetric applications to maximize quality and productivity.

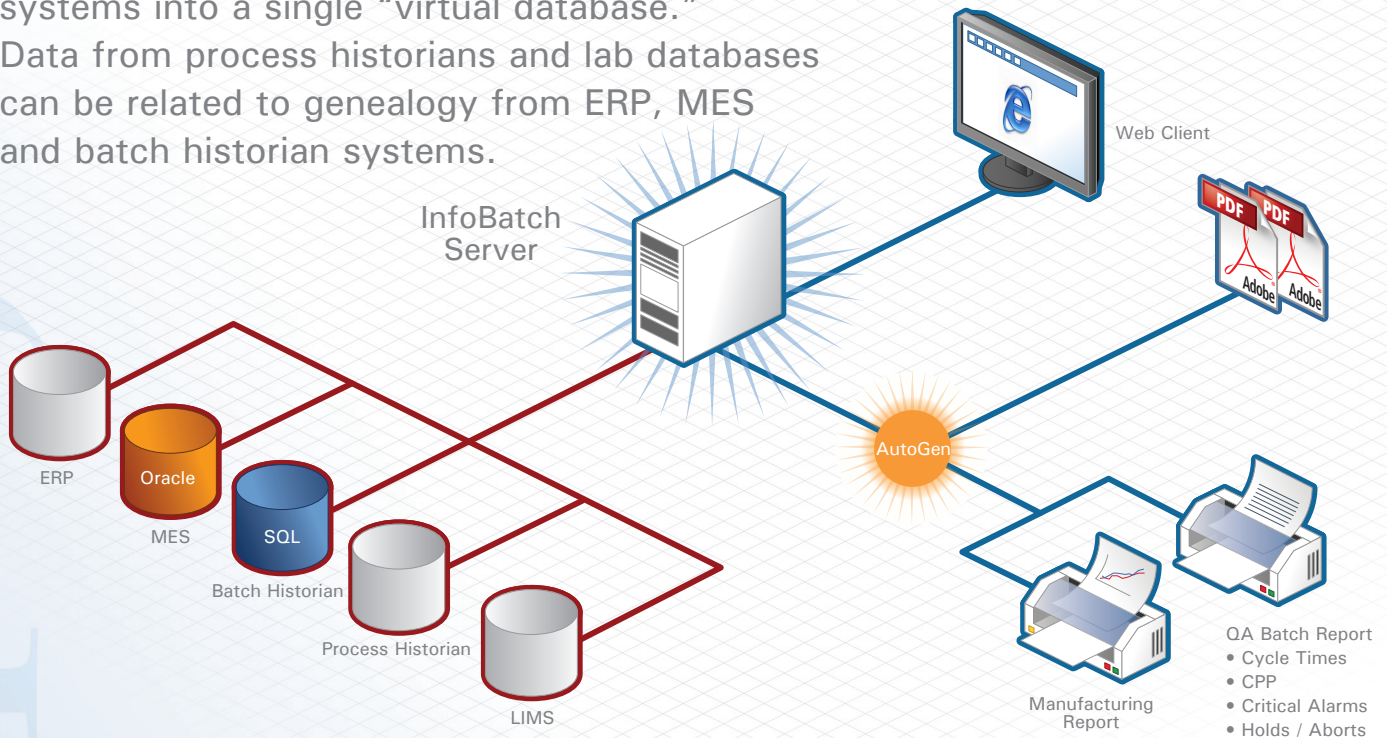
informetric  
S Y S T E M S



# InfoBatch™

combines multiple manufacturing information systems into a single “virtual database.”

Data from process historians and lab databases can be related to genealogy from ERP, MES and batch historian systems.



InfoBatch is a reporting suite that acquires product, process and event information from a wide range of manufacturing systems. With configurable data models and an extensive connector library, InfoBatch is well suited for any application requiring structured, centrally-managed reports.

## informetric

S Y S T E M S

2560 Ninth Street  
Berkeley, CA 94710  
USA

121 Chanlon Road  
New Providence, NJ 07974  
USA

1.908.918.0111 • [www.informetric.com](http://www.informetric.com)

© 2019 Informetric Systems Inc. All rights reserved.  
InfoBatch is a trademark of Informetric.  
All other company and/or product names may be trademarks, registered trademarks or service marks of their respective owners.

The paper on which this document is printed was manufactured in a facility using Informetric quality management software.

Publication No. 10807-0215-6

### SPECIFICATIONS

3001	InfoBatch Server
3020	InfoBatch Configurator
3040	InfoBatch AutoGen
3050	InfoBatch Web Server
3060	InfoBatch Report History
3111	InfoBatch OPC HDA Connector
3115	InfoBatch ODBC Connector <sup>(1)</sup>
3120	InfoBatch Connector for DeltaV Batch Historian
3122	InfoBatch Connector for DeltaV Control Studio
3125	InfoBatch Connector for Syncade
3130	InfoBatch Connector for PI
3140	InfoBatch Connector for AspenTech InfoPlus.21
3150	InfoBatch Connector for Rockwell Historian
3151	InfoBatch Connector for Rockwell Batch Historian
3160	InfoBatch Connector for GE Proficy Historian (iHistorian)
3161	InfoBatch Connector for GE Proficy SQL
3170	InfoBatch Connector for Wonderware Historian

Consult Informetric for a complete list of Connectors.

<sup>(1)</sup> The ODBC Connector can be configured to integrate virtually any database.