

InfoBatch™

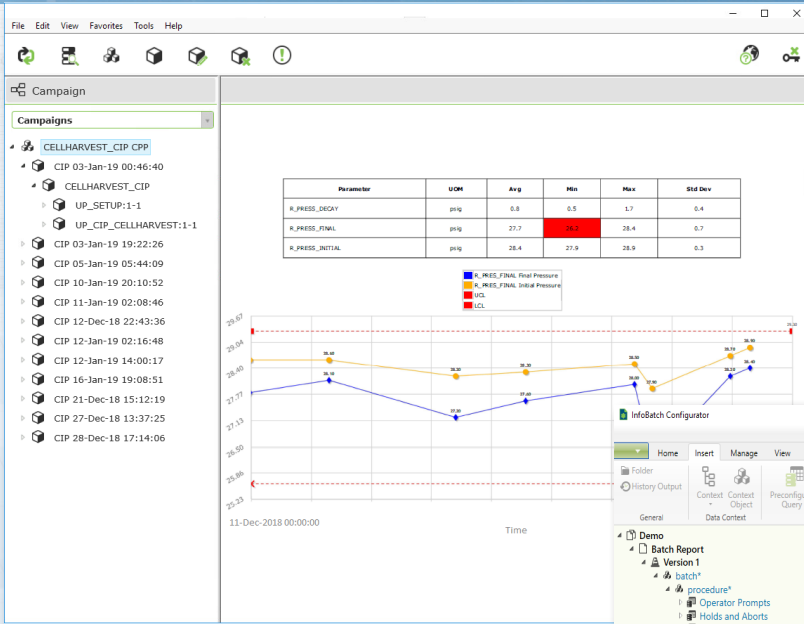
Better Reporting. Better Decisions.™

informetric

S Y S T E M S

DELTA V™

InfoBatch is a manufacturing reporting suite that simplifies compliance documentation, production reporting and process analysis across many industries. By addressing the life cycle issues associated with programmed reporting solutions, InfoBatch has enabled manufacturers to improve productivity and reduce costs.



InfoBatch is not limited to batch reporting and has been applied for manufacturing intelligence in a variety of batch, semi-continuous and continuous processes.

Item	Value
Order Information	Batch#: 20190104.165438
Product	043-8874-0300-1053 Democreation Recipe
Recipe	W01_LS_03MS_PASSETL_BSTY Democreation Recipe
W01 Start	27-Jan-2019 16:38:00
W01 End	27-Jan-2019 18:15:32
W01 Start	27-Jan-2019 00:00:00
Order Signoff	29-Aug-2016 16:07:04

Component	Lot	Quantity	UOM
LOW LEVEL GLUCOSE		20.000	g
WATER		10.000	g
W01_LS_03MS_PASSETL_BSTY		1.000	g

Batch ID	Start	End	Duration
20190104.165438	04-Jan-2019 05:32:14	04-Jan-2019 14:51:11	09 Hrs 18 Min 57 Secs

Unit Procedure	Unit	Start Date/Time	End Date/Time	Duration
UP_DEMO_CIPR01-1-1	LIC-3301	04-Jan-2019 05:32:11	04-Jan-2019 11:50:42	06 Hrs 17 Min 31 Secs
UP_DEMO_FEED1-1-1	LIC-3401	04-Jan-2019 12:01:55	04-Jan-2019 14:25:20	02 Hrs 23 Min 25 Secs

Date/Time	Area	Module	Alarm Type	Alarm Level	Description
04-Jan-2019 06:23:58	DEMO_AREA_1000	LIC-3301/P013301_01	LOW	10-POINT	Low Alarm Value 2.80177 Limit 0
04-Jan-2019 06:24:18	DEMO_AREA_1000	LIC-3301/A13301_01	OFF	10-POINT	General I/O Failure
04-Jan-2019 06:24:18	DEMO_AREA_1000	LIC-3301/A13301_01	HIGH	10-POINT	High Alarm Value 0.134592 Limit 10
04-Jan-2019 06:25:02	DEMO_AREA_1000	LIC-3301/P013301_01	LOW	10-POINT	Low Alarm Value -0.302235 Limit 0
04-Jan-2019 06:26:07	DEMO_AREA_1000	LIC-3301/P013301_01	LOW	10-POINT	Low Alarm Value 1.55348 Limit 0
04-Jan-2019 06:27:00	DEMO_AREA_1000	LIC-3301/P013301_01	LOW	10-POINT	Low Alarm Value -0.0095957 Limit 0

Date/Time	Area	Process Cell	Phase Module	Event Type	Message
04-Jan-2019 05:32:14			VA1_PR_DEMO\11	State Command	State Commanded: START

Date/Time	Area	Process Cell	Phase Module	Event Type	Message
03-Jan-2019 14:24:23	PSF	PSF_PCELL	A1_PR_DEMO_SETUP	Prompt Response	Manual Connections Made? YES phase_boolean

Date/Time	Process Cell	Unit	Phase Module	Parameter	Value	UOM
03-Jan-2019 15:31:07	CIP_PCELL	LIC-3301	CIP_BURST_RINSE	R_AVG_TEMP	80.97901	°C

Informetric Systems is an Emerson Process Management Alliance Program Member. InfoBatch provides out-of-the-box support for Emerson DeltaV™ and Syncade™.

Data from anywhere, when you want it, however you want to see it.

### On demand reports from the source with no replication

InfoBatch does not replicate data. Instead, data is retrieved from the original source each time a report is generated. By eliminating replication, InfoBatch avoids many cost, complexity, reliability and validation issues associated with data replication.

### All-encompassing

InfoBatch aggregates information from various data sources into a single "virtual database". Reports can include any data related to process and quality including critical parameters, bill of materials, work instructions, alarms, events, operator actions, trends, detailed exception/limit violation summaries and cycle times associated with critical operations.

### Industry-standard compatibility



Conformance to industry-standard data access protocols ensures compatibility with

virtually all process historians, batch historians, LIMS, MES and ERP systems. As a result, InfoBatch can be applied without incurring major infrastructure upgrade costs.

### Easy to configure and use

User-friendly Windows® and web browser client applications reduce training costs.

### Automatic report generation

InfoBatch AutoGen™ automatically generates and prints PDF documents on a time and event basis.

### Regulatory compliance

InfoBatch is well suited for regulated facilities and was designed from the start to conform to FDA 21 CFR Part 11, Electronic Records and Signatures. Rigorous security, audit trails and version control ensure compliance with FDA regulations and simplify life cycle management.

### Applications

Batch Reporting

Equipment Tracking

Material Tracking

Alarm Analysis

Certificates of Analysis

Process Analytical Technology (PAT)

Overall Equipment Effectiveness (OEE)

The screenshot shows the 'Edit Expression' window with a tree view on the left and a preview on the right. The tree view shows a 'Source' containing a 'header (level 2)' with an 'Alarm Summary' table. The table has a 'table header' and a 'table body' with a 'foreach' loop over 'ITEM(SOURCE=Alarm)/RESULT'. The preview shows a table with the following data:

Date/Time	Area	Module	Alarm Type	Alarm Level	Description
03-Jan-2019 14:23:58	DEMO_AREA_1000	LIC-3301	LOW	10-POINT	Low Alarm Value 2.80177 Limit 0
03-Jan-2019 14:24:18	DEMO_AREA_1000	TA_09_110/AI09100_01	IOF	10-POINT	General I/O Failure

### Designed for engineers, not programmers

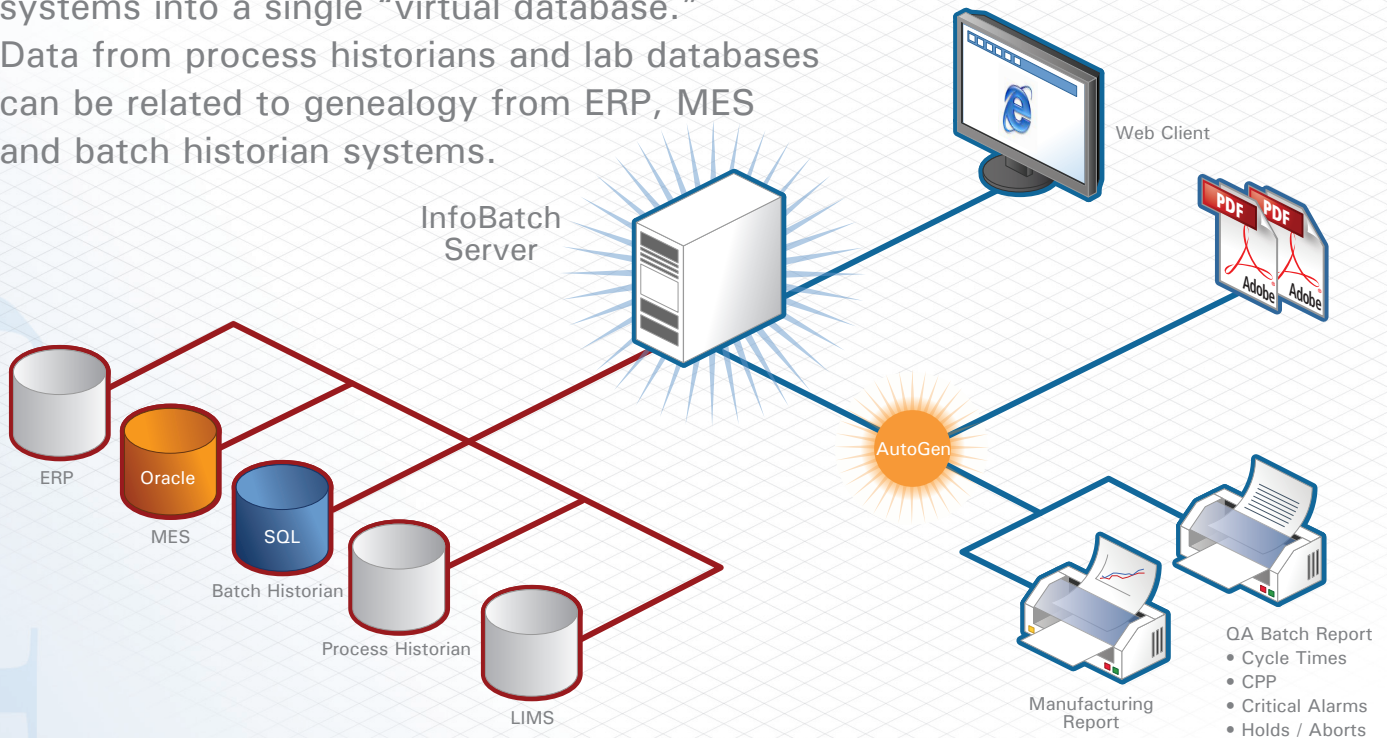
With structured data models and an interactive report layout tool, InfoBatch is configured, not programmed.

Informetric applications adhere to current industry-standard communication and data access protocols. As a result, Informetric software can be integrated with existing legacy systems as well as support new applications.

informetric  
S Y S T E M S

# InfoBatch™

combines multiple manufacturing information systems into a single “virtual database.” Data from process historians and lab databases can be related to genealogy from ERP, MES and batch historian systems.



InfoBatch is a reporting suite that acquires product, process and event information from a wide range of manufacturing systems. With configurable data models and an extensive connector library, InfoBatch is well suited for any application requiring structured, centrally-managed reports.

**informetric** **DELTA V**  
S Y S T E M S

2560 Ninth Street  
Berkeley, CA 94710  
USA

121 Chanlon Road  
New Providence, NJ 07974  
USA

1.908.918.0111 • [www.informetric.com](http://www.informetric.com)

© 2019 Informetric Systems Inc. All rights reserved.  
InfoBatch is a trademark of Informetric.  
All other company and/or product names may be trademarks, registered trademarks or service marks of their respective owners.

The paper on which this document is printed was manufactured in a facility using Informetric quality management software.

Publication No. 10807-0215-6

## SPECIFICATIONS

3001	InfoBatch Server
3020	InfoBatch Configurator
3040	InfoBatch AutoGen
3050	InfoBatch Web Server
3060	InfoBatch Report History
3111	InfoBatch OPC HDA Connector
3115	InfoBatch ODBC Connector <sup>(1)</sup>
3120	InfoBatch Connector for DeltaV Batch Historian
3122	InfoBatch Connector for DeltaV Control Studio
3125	InfoBatch Connector for Syncade
3130	InfoBatch Connector for PI
3140	InfoBatch Connector for AspenTech InfoPlus.21
3150	InfoBatch Connector for Rockwell Historian
3151	InfoBatch Connector for Rockwell Batch Historian
3160	InfoBatch Connector for GE Proficy Historian (iHistorian)
3161	InfoBatch Connector for GE Proficy SQL
3170	InfoBatch Connector for Wonderware Historian

Consult Informetric for a complete list of Connectors.

<sup>(1)</sup> The ODBC Connector can be configured to integrate virtually any database.