

AMS Device Manager Asset Source Interface

- AMS Device Manager Asset Source Interface (ASI) delivers instrument and valve health information to relevant personas, no matter where they are
- Connect multiple AMS Device Manager systems to a single Plantweb Optics installation and display KPIs in a single dashboard
- Create work notifications for instruments and valves and implement closed loop work processes with CMMS (SAP or IBM Maximo)
- Easily collaborate across multiple users and departments to resolve issues based on data from intelligent field devices



AMS Device Manager ASI provides users with the ability to stay in touch with the health of the instruments and valves from anywhere, including their mobile phones.

Introduction

The AMS Device Manager ASI enables intelligent field devices health to be centralized in Plantweb Optics. Asset health is delivered to the relevant users in a clear and meaningful way. This means you can act before a problem affects the process - resulting to poor product quality, or worse, a costly shutdown.

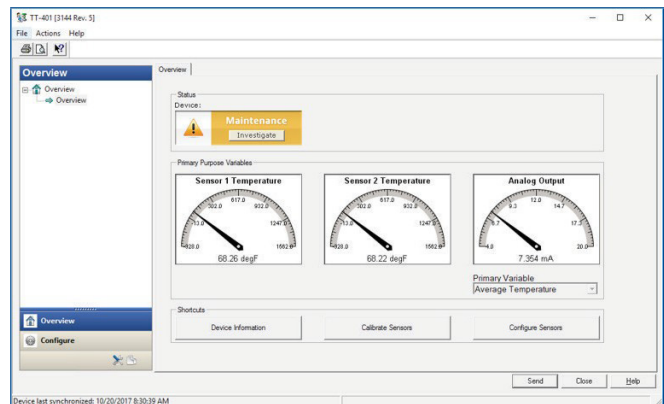
Now, users can quickly identify which valves are bad / unhealthy enabling them to address issues in a timely manner. The Asset View dashboard provides a KPI for devices due for calibration to help drive maintenance work.

Complete Connectivity

Using the AMS Device Manager ASI, users can remotely view the process variables and monitor device health from HART, WirelessHART, FOUNDATION Fieldbus, Profibus, and other devices connected to your host system, including DeltaV™, Ovation™, RS3™, PROVOX™, and technology from many other suppliers.

Easy Integration

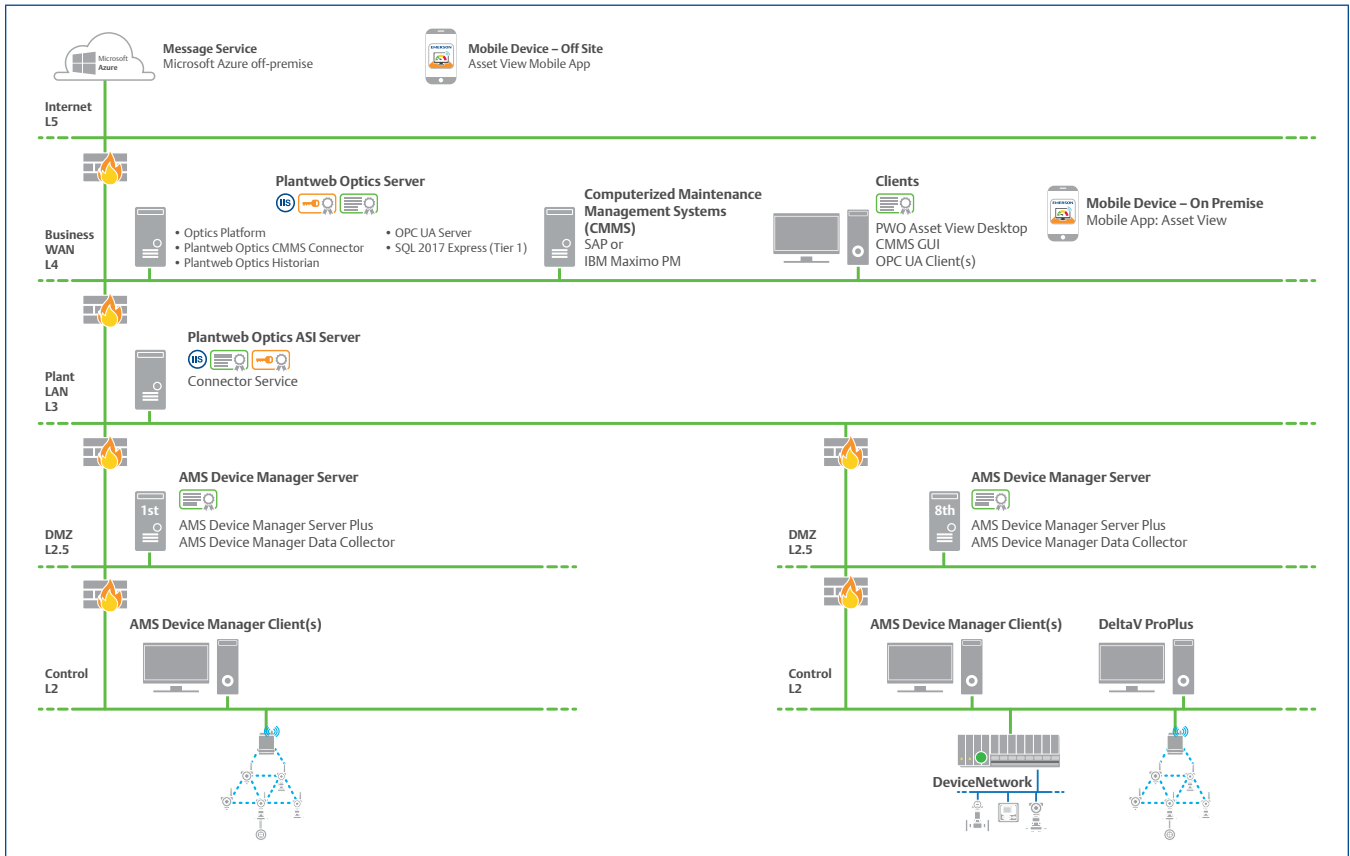
With no custom engineering or mapping effort, your entire AMS Device Manager system(s) is interfaced to Plantweb Optics, ready to monitor thousands of devices.



Easily launch from Plantweb Optics into a device dashboard in AMS Device Manager for further health status information and diagnostic capabilities.

Layered Security Keeps Networks Safe

The AMS Device Manager ASI allows flexible installation for complex network architectures. It may consist of three main components – AMS Device Manager Data Collector, Proxy, and Connector Service. If required, multiple proxies can be installed in between network levels to connect the AMS Device Manager to the Plantweb Optics server, allowing for layered network deployment, as shown below.



Multiple AMS Device Manager Connectivity

Plantweb Optics can connect to multiple AMS Device Manager systems through one Connector Service. This allows all your device and instrument data, managed in multiple databases, to be viewed in a single place, delivering increased efficiency and awareness.

System/Device	Supported Maximum	Remarks
AMS Device Manager Servers	8	
Devices connected to AMS Device Manager	10,000 Total	Maximum servers and devices are independent; 10,000 total devices can be distributed in any way across 8 servers.

Proxy or Connector Service Hardware Requirements

Item	Supported
Processor	2.4 GHz, 4-core processor Intel Core i5 or better
Architecture	64-bit
Memory	8 GB RAM
Hard Drive	SAS Hard Drive (10K RPM)
Disk Space (minimum)	100 GB
Network	1 x 1GB NIC

Proxy or Connector Service Software Requirements

Item	Supported
Operating System	Windows Server 2016 Datacenter Windows Server 2016 Standard Windows Server 2012 R2 Datacenter Windows Server 2012 R2 Standard Windows 10 Pro Windows 10 Enterprise Windows 10 IoT Enterprise 2016 LTSB
Architecture	64-bit
Internet Information Services (IIS)	v8.5, v10 (supplied with OS)

Additional Specifications

Item	Supported
Software	Microsoft .NET Framework 4.7.1
Ethernet	One or more ethernet ports (1GB NIC)
Virtualization	VMWare v6.0 up to v6.7 HyperV 2012, 2016
Antivirus Software	McAfee Endpoint Symantec EndPoint Protection Norton Security with Back-up

Order Information

- Part Number: A488000-DS AMS Device Manager Data Source

AMS Device Manager Versions Supported

- v13.1.1 and later

Plantweb Optics Version Supported

- v1.5.1

Emerson
Reliability Solutions
 835 Innovation Drive
 Knoxville, TN 37932 USA
 ☎ +1 865 675 2400

🌐 www.emerson.com/PlantwebOptics

©2020, Emerson. All rights reserved.

The Emerson logo is a trademark and service mark of Emerson Electric Co. The Plantweb Optics logo is a mark of one of the Emerson family of companies. All other marks are the property of their respective owners.

The contents of this publication are presented for informational purposes only, and while diligent efforts were made to ensure their accuracy, they are not to be construed as warranties or guarantees, express or implied, regarding the products or services described herein or their use or applicability. All sales are governed by our terms and conditions, which are available on request. We reserve the right to modify or improve the designs or specifications of our products at any time without notice.