

- VENDOR-AGNOSTIC
- COMPACT DESIGN
- DATA READY

## ONE IO

### The Only IO Box You'll Ever Need for Plug & Process

With Conexion, our universal Input/Output (IO) connector, physical equipment seamlessly integrates with digital systems. Conexion connects up to seventy IO points from virtually any manufacturer directly to your historian or connected data platform—no custom integration required.

#### KEY FEATURES

##### Vendor-Agnostic Integration Platform for Ease & Scalability

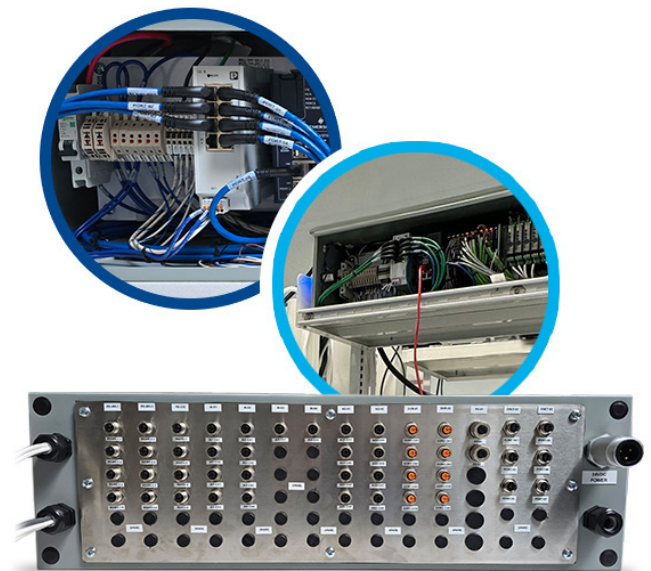
- Simple, scalable platform for rapid deployment—without costly custom integration work
- Universal Application Programming Interface (API) and IO connector supporting multiple systems for data consumption and process control
- Connects pumps, mixers, scales, conveyors, temperature probes, pH sensors, flow meters, and more—regardless of manufacturer
- Automatically labels and organizes equipment data into a standardized format based on NAMUR standards
- Ease of swapping, expanding, or reconfiguring equipment through the equipment control layer

##### Compact Design To Improve Organization and Reduce Complexity

- Ideal for a lean workstation on a benchtop or Smart Junction Box in the field: 36"W x 9"H x 9"D
- Centralizes IO termination, reducing installation time and simplifying field troubleshooting
- Stainless steel finish and cabinet allow readily adaptable installation

##### Data Ready—from Edge to User

- Allows data to flow directly into your historian or connected data platform
- Supports rapid changeover between product recipes or formulations
- Supports edge-to-cloud data transfer via MQTT, OPC UA, and Sparkplug B, with plug-and-play compatibility for DeltaV™ and Ignition®



# Get More Out of the Instruments You Already Have

## Stream Data From Your Existing Equipment Directly to Where Decisions Are Made



### Reduced Downtime

Swap out a pump or sensor without rewiring or reprogramming, getting production back up faster.



### Compliance

Continuous automatic data capture supports FDA, GMP, and other audit trail requirements without manual data entry.



### Faster Troubleshooting

Centralized connections mean your team can diagnose and fix issues faster, without tracing tangled wiring.



### Faster Startup

Cut the time between equipment installation and first production run when standing up new lines or pilot skids.

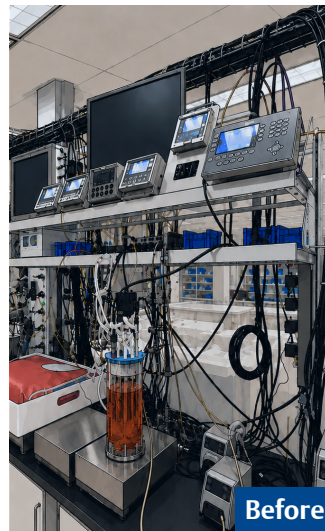


### Future-Proof

Easily add equipment or upgrade instruments without replacing your entire integration infrastructure.

**Ready to Simplify Connectivity  
and Improve Data Access?**

**Contact Us to Get Started**



Before



After

## About Control Associates

Control Associates is a provider of process control systems, valves, actuation, instrumentation, regulators, relief valves, asset reliability, systems integration, manufacturing execution systems, and data management solutions for industrial and commercial customers in the tri-state metropolitan New York, New Jersey, and Connecticut region. Our unique long-term partnership with Emerson and other leading manufacturers enables us to connect customers with innovative technology, engineering expertise, and 24/7 lifecycle support services to optimize the reliability, safety, profitability, and performance of their operations. Our 40,000 sq ft facility is 20 miles from Manhattan, offering local services and support.



20 Commerce Drive, Allendale, NJ 07401 • 201.934.9200  
control-associates.com • info@control-associates.com